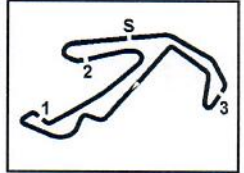


3.1
GSX8R



Misano, 5-6 Aprile 2025

Suzuki GSX 8R Cup - Classifica Qualifiche 1

Misano Circuit Sic 58 4.226 m

1 / 2

Num. Pilota	Naz	Motoclub	Team	Moto	Classe	Tempo	Dist.	Rel.	Giri
1	93	STARNONE Fabio	ITA Ducale	Up Map	Suzuki GSX-8R		1'46.819		9
2	24	AGAZZI Michel	ITA Bergamo	MotorMi	Suzuki GSX-8R		1'47.034	0.215	0.215 10
3	341	TERRANOVA Kevin	ITA Bikers da Cordoli	Bikers da Cordoli	Suzuki GSX-8R		1'47.307	0.488	0.273 11
4	36	DESTEFANIS Matteo	ITA Ducale	Tecnicamoto	Suzuki GSX-8R		1'47.546	0.727	0.239 10
5	68	SORRENTI Andrea	ITA Ducale	Racing Factory	Suzuki GSX-8R		1'47.623	0.804	0.077 11
6	11	COMO Marco	ITA Bikers da Cordoli		Suzuki GSX-8R		1'47.832	1.013	0.209 10
7	45	ZAPPA Andrea	ITA Desio	Tecnicamoto	Suzuki GSX-8R	O35	1'48.614	1.795	0.782 10
8	23	GALLAN Matteo	ITA Lago d'Iseo	Tecnicamoto	Suzuki GSX-8R	O35	1'48.744	1.925	0.130 11
9	32	DONESANA Fabio	ITA Ala	Racing Factory	Suzuki GSX-8R	O35	1'49.134	2.315	0.390 11
10	10	IANNAZZO Alex	ITA Monaco	E&E Squadra Corse	Suzuki GSX-8R		1'49.203	2.384	0.069 10
11	63	FALGIANO Raffaele	ITA Airola Motor Sport	TFG Racing	Suzuki GSX-8R		1'49.550	2.731	0.347 9
12	123	SALAROLI Alessio	ITA Eleven	Mceleven	Suzuki GSX-8R		1'49.511	2.792	0.061 9
13	41	VOCH Lorenzo	ITA Bikers da Cordoli	Bikers da Cordoli	Suzuki GSX-8R		1'49.674	2.855	0.063 10
14	82	BATTISTI Gianluca	ITA 44 Racing Team	44 Racing	Suzuki GSX-8R	O35	1'49.723	2.904	0.049 10
15	22	MANDRILE Lorenzo	ITA Desio	Tecnicamoto	Suzuki GSX-8R		1'49.729	2.910	0.006 9
16	13	GIACHINO Mattia	ITA Ferentino	Power Green Racing Team	Suzuki GSX-8R	O35	1'50.028	3.209	0.299 9
17	5	BASSI Daniele	ITA Bikers da Cordoli	Bikers da Cordoli	Suzuki GSX-8R		1'50.774	3.955	0.746 10
18	37	CERVIONI Alessandro	ITA Viadana	Ottavani Racing	Suzuki GSX-8R		1'50.790	3.971	0.016 11
19	19	CLEMENTE Jacopo	ITA 777	Bierreti	Suzuki GSX-8R		1'50.871	4.052	0.081 10
20	29	GIBELLINI Daniele	ITA Valchiavenna		Suzuki GSX-8R		1'51.191	4.372	0.320 10
21	42	LAUDATI Walter	ITA Moto Racing Rieti	Mototecnica Factory	Suzuki GSX-8R	O35	1'51.237	4.418	0.046 9
22	21	ROVELLI Federico	ITA Porta Nuova	Guidart Moto Sport	Suzuki GSX-8R		1'51.534	4.715	0.297 10
23	3	ACCURSO Angelantonio	ITA Caserta		Suzuki GSX-8R		1'51.657	4.838	0.123 9
24	4	FERRARA Yuri	ITA Mi Racing Team	MotorMi	Suzuki GSX-8R		1'52.226	5.407	0.569 11
25	12	SPINA Paolo Francesco	ITA Ferentino	Colatosti Motofficina	Suzuki GSX-8R		1'52.547	5.728	0.321 10
26	66	TROMBIN Alessio	ITA NMC Renzo Pasolini	Pelle Racing Team	Suzuki GSX-8R		1'53.042	6.223	0.495 9
27	88	AGAZZI Nicola	ITA Bergamo		Suzuki GSX-8R		1'53.127	6.308	0.085 9
28	34	MUSACCHIO Vincenzo	ITA BS Corse		Suzuki GSX-8R		1'54.176	7.357	1.049 10
29	27	LISANTI Umberto	ITA Valchiavenna		Suzuki GSX-8R	O35	1'54.345	7.526	0.169 10
30	8	MAZZOCCHI Manuel	ITA Moto Racing Rieti	Mototecnica Racing	Suzuki GSX-8R	O35	1'55.794	8.975	1.449 5
31	53	BOUCHARD Enrico	ITA Busca		Suzuki GSX-8R	O35	1'58.892	12.073	3.098 9

Umidità	61%	ARIA	17°C
Condizioni	DRY	Temp.	28°C

[Handwritten signature] 12:50

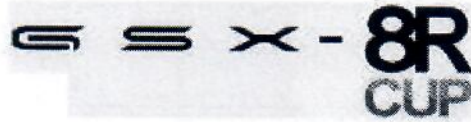
Direttore di Gara : Raffaele De Fabritiis

05/04/2025 Inizio 12:21 Fine 12:43

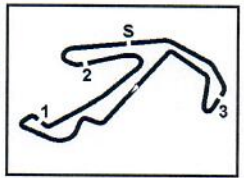
Esposta alle:

Powered by PERUGIA TIMING





3.1
GSX8R



Misano, 5-6 Aprile 2025

Suzuki GSX 8R Cup - Classifica Qualifiche 1

Misano Circuit Sic 58 4.226 m
2 / 2

Highlights

12.21		Start Of Session
12.39	22 L. MANDRILE	#22 On the Gravel - Re-Joined Turn 13
12.43		End Of Session

Fastest Laps Sequence

Jum.	Concorrente	Naz	Team	Moto	Local Time	Tempo	Dist.	Media
45	A. ZAPPA	ITA	Tecnicamoto	Suzuki GSX-8R	12:24'58.226	1'51.159		136,863
82	G. BATTISTI	ITA	44 Racing	Suzuki GSX-8R	12:24'58.618	1'50.951	-0.208	137,120
11	M. COMO	ITA		Suzuki GSX-8R	12:25'04.165	1'49.960	-0.991	138,356
45	A. ZAPPA	ITA	Tecnicamoto	Suzuki GSX-8R	12:26'48.014	1'49.788	-0.172	138,573
82	G. BATTISTI	ITA	44 Racing	Suzuki GSX-8R	12:26'48.341	1'49.723	-0.065	138,655
68	A. SORRENTI	ITA	Racing Factory	Suzuki GSX-8R	12:27'34.925	1'48.656	-1.067	140,016
24	M. AGAZZI	ITA	MotorMi	Suzuki GSX-8R	12:27'51.014	1'47.896	-0.760	141,002
93	F. STARNONE	ITA	Up Map	Suzuki GSX-8R	12:28'01.711	1'46.819	-1.077	142,424

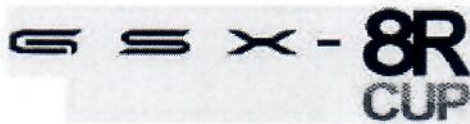
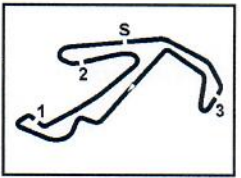
Direttore di Gara : Raffaele De Fabritiis

	Inizio	Fine
05/04/2025	12:21	12:43

Esposta alle:

Powered by PERUGIA TIMING



**3.2**
GSX8R

Misano, 5-6 Aprile 2025

Suzuki GSX 8R Cup - Settori e Velocità Qualifiche 1

Misano Circuit Sic 58 4.226 m

MIGLIOR GIRO

1	93 STARNONE Fabio	Suzuki GSX-8R	1'46.819
2	24 AGAZZI Michel	Suzuki GSX-8R	1'47.034
3	341 TERRANOVA Kevin	Suzuki GSX-8R	1'47.307
4	36 DESTEFANIS Matteo	Suzuki GSX-8R	1'47.546
5	68 SORRENTI Andrea	Suzuki GSX-8R	1'47.623
6	11 COMO Marco	Suzuki GSX-8R	1'47.832
7	45 ZAPPA Andrea	Suzuki GSX-8R	1'48.614
8	23 GALLAN Matteo	Suzuki GSX-8R	1'48.744
9	32 DONESANA Fabio	Suzuki GSX-8R	1'49.134
10	10 IANNAZZO Alex	Suzuki GSX-8R	1'49.203
11	63 FALGIANO Raffaele	Suzuki GSX-8R	1'49.550
12	123 SALAROLI Alessio	Suzuki GSX-8R	1'49.611
13	41 VOCH Lorenzo	Suzuki GSX-8R	1'49.674
14	82 BATTISTI Gianluca	Suzuki GSX-8R	1'49.723
15	22 MANDRILE Lorenzo	Suzuki GSX-8R	1'49.729
16	13 GIACHINO Mattia	Suzuki GSX-8R	1'50.028
17	5 BASSI Daniele	Suzuki GSX-8R	1'50.774
18	37 CERVIONI Alessandro	Suzuki GSX-8R	1'50.790
19	19 CLEMENTE Jacopo	Suzuki GSX-8R	1'50.871
20	29 GIBELLINI Daniele	Suzuki GSX-8R	1'51.191
21	42 LAUDATI Walter	Suzuki GSX-8R	1'51.237
22	21 ROVELLI Federico	Suzuki GSX-8R	1'51.534
23	3 ACCURSO Angelantonio	Suzuki GSX-8R	1'51.657
24	4 FERRARA Yuri	Suzuki GSX-8R	1'52.226
25	12 SPINA Paolo Francesco	Suzuki GSX-8R	1'52.547
26	66 TROMBIN Alessio	Suzuki GSX-8R	1'53.042
27	88 AGAZZI Nicola	Suzuki GSX-8R	1'53.127
28	34 MUSACCHIO Vincenzo	Suzuki GSX-8R	1'54.176
29	27 LISANTI Umberto	Suzuki GSX-8R	1'54.345
30	8 MAZZOCCHI Manuel	Suzuki GSX-8R	1'55.794
31	53 BOUCHARD Enrico	Suzuki GSX-8R	1'58.892

SPEED

1	24 AGAZZI Michel	Suzuki GSX-8R	203,0
2	341 TERRANOVA Kevin	Suzuki GSX-8R	201,5
3	37 CERVIONI Alessandro	Suzuki GSX-8R	199,3
4	3 ACCURSO Angelantonio	Suzuki GSX-8R	198,5
5	123 SALAROLI Alessio	Suzuki GSX-8R	197,8
6	11 COMO Marco	Suzuki GSX-8R	197,8
7	10 IANNAZZO Alex	Suzuki GSX-8R	197,8
8	36 DESTEFANIS Matteo	Suzuki GSX-8R	197,4
9	82 BATTISTI Gianluca	Suzuki GSX-8R	197,4
10	93 STARNONE Fabio	Suzuki GSX-8R	197,1
11	32 DONESANA Fabio	Suzuki GSX-8R	196,7
12	68 SORRENTI Andrea	Suzuki GSX-8R	196,7
13	41 VOCH Lorenzo	Suzuki GSX-8R	196,0
14	5 BASSI Daniele	Suzuki GSX-8R	196,0
15	34 MUSACCHIO Vincenzo	Suzuki GSX-8R	195,3
16	45 ZAPPA Andrea	Suzuki GSX-8R	195,3
17	21 ROVELLI Federico	Suzuki GSX-8R	194,9
18	22 MANDRILE Lorenzo	Suzuki GSX-8R	194,6
19	4 FERRARA Yuri	Suzuki GSX-8R	194,6
20	19 CLEMENTE Jacopo	Suzuki GSX-8R	194,6
21	42 LAUDATI Walter	Suzuki GSX-8R	193,9
22	88 AGAZZI Nicola	Suzuki GSX-8R	193,5
23	63 FALGIANO Raffaele	Suzuki GSX-8R	193,2
24	29 GIBELLINI Daniele	Suzuki GSX-8R	192,9
25	66 TROMBIN Alessio	Suzuki GSX-8R	192,9
26	13 GIACHINO Mattia	Suzuki GSX-8R	192,5
27	12 SPINA Paolo Francesco	Suzuki GSX-8R	191,5
28	23 GALLAN Matteo	Suzuki GSX-8R	191,5
29	8 MAZZOCCHI Manuel	Suzuki GSX-8R	190,8
30	27 LISANTI Umberto	Suzuki GSX-8R	188,8
31	53 BOUCHARD Enrico	Suzuki GSX-8R	185,6

SEG. 1

1	93 STARNONE Fabio	27.992
2	24 AGAZZI Michel	28.356
3	11 COMO Marco	28.358
4	36 DESTEFANIS Matteo	28.377
5	68 SORRENTI Andrea	28.430
6	341 TERRANOVA Kevin	28.526
7	82 BATTISTI Gianluca	28.608
8	23 GALLAN Matteo	28.722
9	45 ZAPPA Andrea	28.761
10	123 SALAROLI Alessio	28.840
11	32 DONESANA Fabio	28.861
12	41 VOCH Lorenzo	28.880
13	63 FALGIANO Raffaele	28.964
14	22 MANDRILE Lorenzo	28.985
15	13 GIACHINO Mattia	29.055
16	10 IANNAZZO Alex	29.101
17	42 LAUDATI Walter	29.252
18	5 BASSI Daniele	29.274
19	19 CLEMENTE Jacopo	29.282
20	3 ACCURSO Angelantonio	29.297
21	29 GIBELLINI Daniele	29.521
22	37 CERVIONI Alessandro	29.644
23	21 ROVELLI Federico	29.680
24	12 SPINA Paolo Francesco	29.903
25	4 FERRARA Yuri	29.922
26	66 TROMBIN Alessio	29.957
27	88 AGAZZI Nicola	30.097
28	27 LISANTI Umberto	30.103
29	8 MAZZOCCHI Manuel	30.209
30	34 MUSACCHIO Vincenzo	30.366
31	53 BOUCHARD Enrico	31.153

SEG. 2

1	93 STARNONE Fabio	25.110
2	341 TERRANOVA Kevin	25.110
3	24 AGAZZI Michel	25.161
4	11 COMO Marco	25.218
5	68 SORRENTI Andrea	25.240
6	36 DESTEFANIS Matteo	25.353
7	32 DONESANA Fabio	25.473
8	23 GALLAN Matteo	25.553
9	10 IANNAZZO Alex	25.595
10	41 VOCH Lorenzo	25.633
11	63 FALGIANO Raffaele	25.634
12	45 ZAPPA Andrea	25.656
13	22 MANDRILE Lorenzo	25.727
14	29 GIBELLINI Daniele	25.792
15	123 SALAROLI Alessio	25.805
16	82 BATTISTI Gianluca	25.805
17	13 GIACHINO Mattia	25.858
18	5 BASSI Daniele	25.867
19	37 CERVIONI Alessandro	25.979
20	3 ACCURSO Angelantonio	26.015
21	4 FERRARA Yuri	26.150
22	19 CLEMENTE Jacopo	26.155
23	21 ROVELLI Federico	26.191
24	12 SPINA Paolo Francesco	26.328
25	42 LAUDATI Walter	26.343
26	88 AGAZZI Nicola	26.379
27	66 TROMBIN Alessio	26.484
28	34 MUSACCHIO Vincenzo	26.858
29	27 LISANTI Umberto	27.072
30	8 MAZZOCCHI Manuel	27.445
31	53 BOUCHARD Enrico	28.363

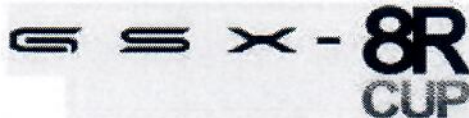
SEG. 3

1	93 STARNONE Fabio	29.725
2	36 DESTEFANIS Matteo	29.891
3	341 TERRANOVA Kevin	30.032
4	24 AGAZZI Michel	30.056
5	11 COMO Marco	30.197
6	68 SORRENTI Andrea	30.231
7	32 DONESANA Fabio	30.294
8	23 GALLAN Matteo	30.398
9	45 ZAPPA Andrea	30.445
10	37 CERVIONI Alessandro	30.454
11	123 SALAROLI Alessio	30.513
12	10 IANNAZZO Alex	30.530
13	22 MANDRILE Lorenzo	30.550
14	82 BATTISTI Gianluca	30.568
15	63 FALGIANO Raffaele	30.623
16	13 GIACHINO Mattia	30.661
17	19 CLEMENTE Jacopo	30.760
18	41 VOCH Lorenzo	30.786
19	42 LAUDATI Walter	30.849
20	3 ACCURSO Angelantonio	30.858
21	5 BASSI Daniele	30.914
22	29 GIBELLINI Daniele	30.994
23	21 ROVELLI Federico	31.203
24	12 SPINA Paolo Francesco	31.259
25	4 FERRARA Yuri	31.360
26	27 LISANTI Umberto	31.421
27	34 MUSACCHIO Vincenzo	31.434
28	88 AGAZZI Nicola	31.447
29	66 TROMBIN Alessio	31.573
30	8 MAZZOCCHI Manuel	32.436
31	53 BOUCHARD Enrico	32.955

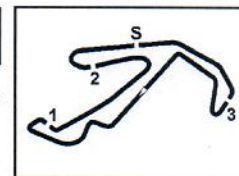
SEG. 4

1	24 AGAZZI Michel	23.438
2	68 SORRENTI Andrea	23.472
3	36 DESTEFANIS Matteo	23.566
4	341 TERRANOVA Kevin	23.639
5	93 STARNONE Fabio	23.712
6	11 COMO Marco	23.712
7	45 ZAPPA Andrea	23.752
8	10 IANNAZZO Alex	23.889
9	32 DONESANA Fabio	23.891
10	23 GALLAN Matteo	23.903
11	123 SALAROLI Alessio	23.943
12	63 FALGIANO Raffaele	23.986
13	82 BATTISTI Gianluca	23.992
14	41 VOCH Lorenzo	23.993
15	13 GIACHINO Mattia	24.172
16	22 MANDRILE Lorenzo	24.176
17	37 CERVIONI Alessandro	24.378
18	5 BASSI Daniele	24.411
19	29 GIBELLINI Daniele	24.426
20	21 ROVELLI Federico	24.450
21	19 CLEMENTE Jacopo	24.451
22	3 ACCURSO Angelantonio	24.528
23	42 LAUDATI Walter	24.635
24	4 FERRARA Yuri	24.746
25	12 SPINA Paolo Francesco	24.847
26	66 TROMBIN Alessio	24.881
27	88 AGAZZI Nicola	25.032
28	27 LISANTI Umberto	25.121
29	34 MUSACCHIO Vincenzo	25.123
30	8 MAZZOCCHI Manuel	25.375
31	53 BOUCHARD Enrico	26.076





3.3
GSX8R



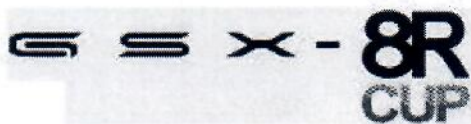
Misano, 5-6 Aprile 2025

Suzuki GSX 8R Cup - Ideal Time Qualifiche 1

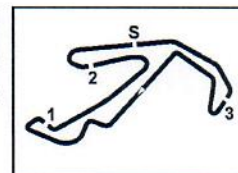
Misano Circuit Sic 58 4.226 m

Jum. Pilota	Moto	Seg. 1 Diff. 1	Seg. 2 Diff. 2	Seg. 3 Diff. 3	Seg. 4 Diff. 4	Ideal Time		
						Miglior Giro	Pos.	Diff.
1 93 STARNONE F. (ITA)	Suzuki GSX-8R	27.992 +0.067	25.110	29.725 +0.213	23.712	1'46.539 1'46.819	1	0.280
2 24 AGAZZI M. (ITA)	Suzuki GSX-8R	28.356	25.161	30.056 +0.023	23.438	1'47.011 1'47.034	2	0.023
3 36 DESTEFANIS M. (ITA)	Suzuki GSX-8R	28.377 +0.125	25.353 +0.162	29.891	23.566 +0.072	1'47.187 1'47.546	4	0.359
4 341 TERRANOVA K. (ITA)	Suzuki GSX-8R	28.526	25.110	30.032	23.639	1'47.307 1'47.307	3	
5 68 SORRENTI A. (ITA)	Suzuki GSX-8R	28.430 +0.144	25.240	30.231 +0.106	23.472	1'47.373 1'47.623	5	0.250
6 11 COMO M. (ITA)	Suzuki GSX-8R	28.358 +0.262	25.218	30.197	23.712 +0.085	1'47.485 1'47.832	6	0.347
7 32 DONESANA F. (ITA)	Suzuki GSX-8R	28.861 +0.184	25.473 +0.260	30.294	23.891 +0.171	1'48.519 1'49.134	9	0.615
8 23 GALLAN M. (ITA)	Suzuki GSX-8R	28.722 +0.009	25.553 +0.068	30.398 +0.026	23.903 +0.065	1'48.576 1'48.744	8	0.168
9 45 ZAPPA A. (ITA)	Suzuki GSX-8R	28.761	25.656	30.445	23.752	1'48.614 1'48.614	7	
10 82 BATTISTI G. (ITA)	Suzuki GSX-8R	28.608 +0.392	25.805 +0.229	30.568 +0.129	23.992	1'48.973 1'49.723	14	0.750
11 123 SALAROLI A. (ITA)	Suzuki GSX-8R	28.840 +0.114	25.805 +0.051	30.513 +0.180	23.943 +0.165	1'49.101 1'49.611	12	0.510
12 10 IANNAZZO A. (ITA)	Suzuki GSX-8R	29.101 +0.088	25.595	30.530	23.889	1'49.115 1'49.203	10	0.088
13 63 FALGIANO R. (ITA)	Suzuki GSX-8R	28.964 +0.063	25.634	30.623 +0.122	23.986 +0.158	1'49.207 1'49.550	11	0.343
14 41 VOCH L. (ITA)	Suzuki GSX-8R	28.880 +0.128	25.633 +0.221	30.786 +0.024	23.993 +0.009	1'49.292 1'49.674	13	0.382
15 22 MANDRILE L. (ITA)	Suzuki GSX-8R	28.985 +0.077	25.727 +0.214	30.550	24.176	1'49.438 1'49.729	15	0.291
16 13 GIACHINO M. (ITA)	Suzuki GSX-8R	29.055 +0.119	25.858	30.661 +0.138	24.172 +0.025	1'49.746 1'50.028	16	0.282
17 37 CERVIONI A. (ITA)	Suzuki GSX-8R	29.644 +0.070	25.979 +0.129	30.454	24.378 +0.136	1'50.455 1'50.790	18	0.335
18 5 BASSI D. (ITA)	Suzuki GSX-8R	29.274	25.867 +0.183	30.914	24.411 +0.125	1'50.466 1'50.774	17	0.308
19 19 CLEMENTE J. (ITA)	Suzuki GSX-8R	29.282	26.155	30.760	24.451 +0.223	1'50.648 1'50.871	19	0.223
20 3 ACCURSO A. (ITA)	Suzuki GSX-8R	29.297 +0.237	26.015 +0.565	30.858 +0.070	24.528 +0.087	1'50.698 1'51.657	23	0.959
21 29 GIBELLINI D. (ITA)	Suzuki GSX-8R	29.521 +0.170	25.792 +0.288	30.994	24.426	1'50.733 1'51.191	20	0.458
22 42 LAUDATI W. (ITA)	Suzuki GSX-8R	29.252	26.343 +0.055	30.849	24.635 +0.103	1'51.079 1'51.237	21	0.158
23 21 ROVELLI F. (ITA)	Suzuki GSX-8R	29.680	26.191	31.203	24.450 +0.010	1'51.524 1'51.534	22	0.010
24 4 FERRARA Y. (ITA)	Suzuki GSX-8R	29.922 +0.048	26.150	31.360	24.746	1'52.178 1'52.226	24	0.048
25 12 SPINA P. (ITA)	Suzuki GSX-8R	29.903 +0.150	26.328 +0.015	31.259	24.847 +0.045	1'52.337 1'52.547	25	0.210
26 66 TROMBIN A. (ITA)	Suzuki GSX-8R	29.957	26.484	31.573 +0.043	24.881 +0.104	1'52.895 1'53.042	26	0.147
27 88 AGAZZI N. (ITA)	Suzuki GSX-8R	30.097	26.379 +0.098	31.447 +0.057	25.032 +0.017	1'52.955 1'53.127	27	0.172
28 27 LISANTI U. (ITA)	Suzuki GSX-8R	30.103	27.072 +0.204	31.421 +0.257	25.121 +0.167	1'53.717 1'54.345	29	0.628
29 34 MUSACCHIO V. (ITA)	Suzuki GSX-8R	30.366 +0.168	26.858 +0.227	31.434	25.123	1'53.781 1'54.176	28	0.395
30 8 MAZZOCCHI M. (ITA)	Suzuki GSX-8R	30.209	27.445 +0.257	32.436 +0.036	25.375 +0.036	1'55.465 1'55.794	30	0.329
31 53 BOUCHARD E. (ITA)	Suzuki GSX-8R	31.153	28.363 +0.092	32.955 +0.206	26.076 +0.047	1'58.547 1'58.892	31	0.345
Ideal Time Assoluto		27.992	25.110	29.725	23.438	1'46.265		





3.4
GSX8R



Misano, 5-6 Aprile 2025
Suzuki GSX 8R Cup - Analisi Tempi Qualifiche 1

Misano Circuit Sic 58 4.226 m

4 / 4

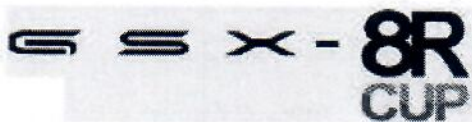
123 A. SALAROLI (1'49.611)

Giro	Seg.1	Seg.2	Seg.3	Seg.4	T. Giro	km/h	Local Time
		27.355	32.180	25.045		197,8	12:23'08.419
1	30.371	26.307	30.864	24.125	1'51.667	191,5	12:25'00.086
2	29.047	26.002	30.773	23.964	1'49.786	191,5	12:26'49.872
3	28.954	25.856	30.693	24.108	1'49.611	191,8	12:28'39.483
4	29.084	26.216	31.581	25.093	1'51.974	184,6	12:30'31.457
5	36.112	26.039	30.663	23.943	1'56.757	197,1	12:32'28.214
6	29.158	25.805	32.003	1'30.894	2'57.860P	184,6	12:35'26.074
7	51.495	28.693	31.807	24.625	2'16.620P	185,9	12:37'42.694
8	29.009	26.254	30.996	24.314	1'50.573	190,1	12:39'33.267
9	28.840	25.886	30.513	24.544	1'49.783	191,5	12:41'23.050

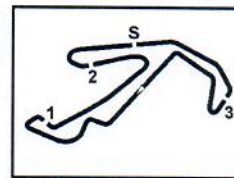
341 K. TERRANOVA (1'47.307)

Giro	Seg.1	Seg.2	Seg.3	Seg.4	T. Giro	km/h	Local Time
							12:20'54.836
1	1'03.977	26.329	32.434	24.968	2'27.708P	188,8	12:23'22.544
2	38.515	29.339	31.629	41.199	2'20.682P	194,6	12:25'43.226
3	46.170	26.065	30.710	24.398	2'07.343P	194,6	12:27'50.569
4	31.782	27.291	30.595	24.017	1'53.685	196,0	12:29'44.254
5	28.650	25.295	30.389	23.928	1'48.262	196,0	12:31'32.516
6	28.653	25.379	30.132	24.419	1'48.583	197,1	12:33'21.099
7	28.526	25.110	30.032	23.639	1'47.307	201,5	12:35'08.406
8	28.666	25.194	30.286	24.043	1'48.189	196,0	12:36'56.595
9	28.599	25.276	30.377	23.839	1'48.091	198,9	12:38'44.686
10	32.093	31.822	43.685	27.586	2'15.186	188,2	12:40'59.872
11	33.683	27.057	33.515	29.773	2'04.028	188,8	12:43'03.900





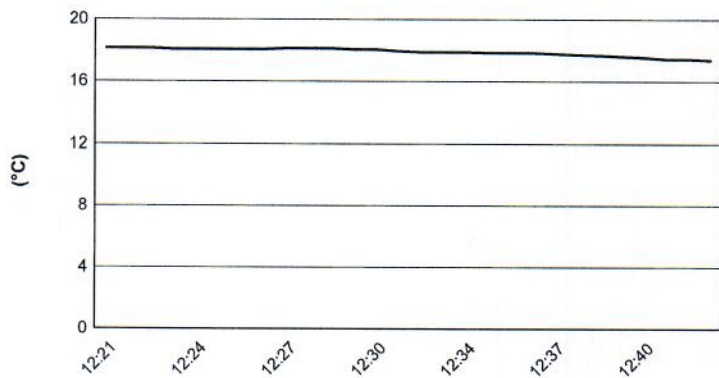
3.5
GSX8R



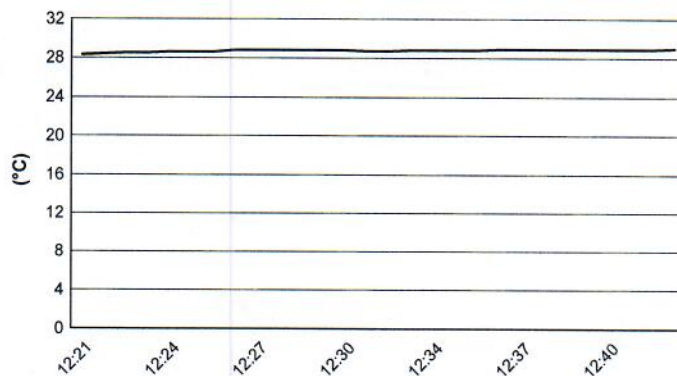
Misano Circuit Sic 58 4.226 m

Misano, 5-6 Aprile 2025
Suzuki GSX 8R Cup - Meteo Qualifiche 1
Session started 12:21 - Session ended 12:43

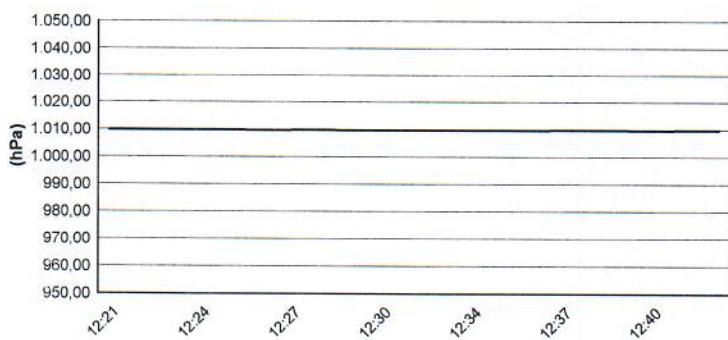
Air Temperature



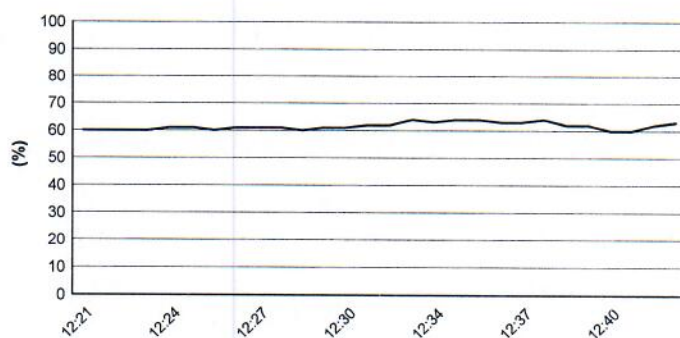
Track Temperature



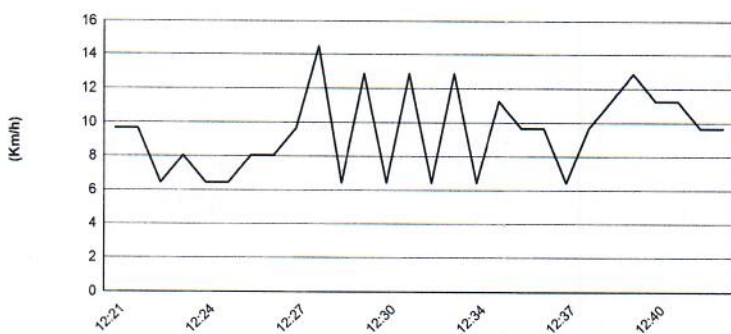
Air Pressure



Humidity



Wind Speed



Wind Direction

